

Assembly

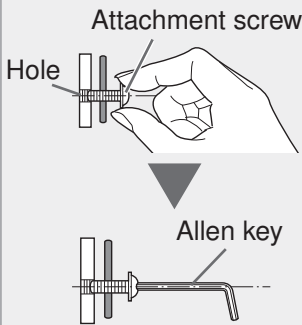
1 Attaching the controller stand to the right or left side panel of this unit

Fasten the controller stand with the attachment screws. (4 positions)

Use this screw ··· Attachment screws (M6 × 13)

 × 4 pcs. (Black)

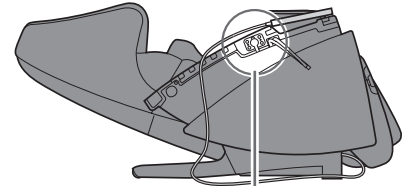
How to tighten the screws



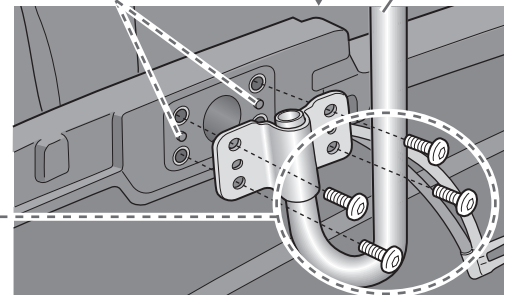
- Tighten the 4 screws lightly using your fingers. (Make the screws level with the holes.)

- Tighten firmly with the allen key.
- Screw may be damaged if you tighten the screw inserted into the hole crookedly using an allen key.

<When attaching on the right side panel>



- Align the 2 prongs of the side panel with the holes of the controller stand.



2 Fasten the armrest with the attachment screws. (On both the right and left sides)

1 Insert the armrest into the unit.

- “R” (right side) and “L” (left side) are indicated at the bottom of the armrest.
- Insert the armrest from the top aligning the ▲ marks on the side of the armrest.
- Be careful to avoid pinching your fingers and air plugs.

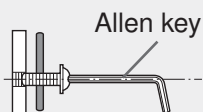
2 Slide the armrest toward the back while pushing it downward.

3 Fasten the armrest with the attachment screws. (One position for each side)

Use this screw ··· Attachment screws (M6 × 20)

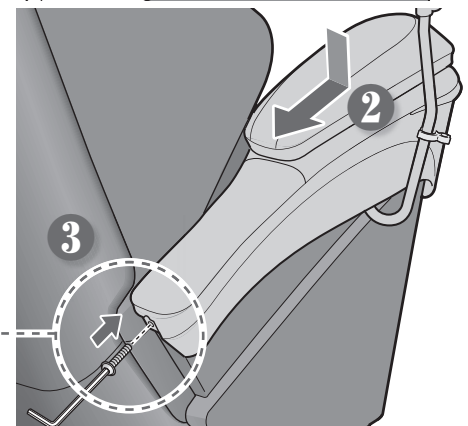
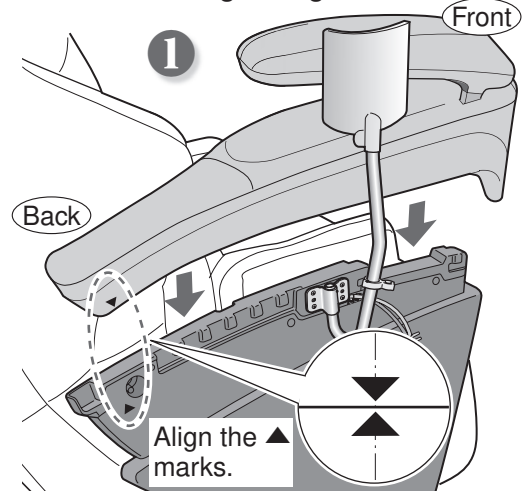
 × 2 pcs. (Silver)

How to tighten the screws



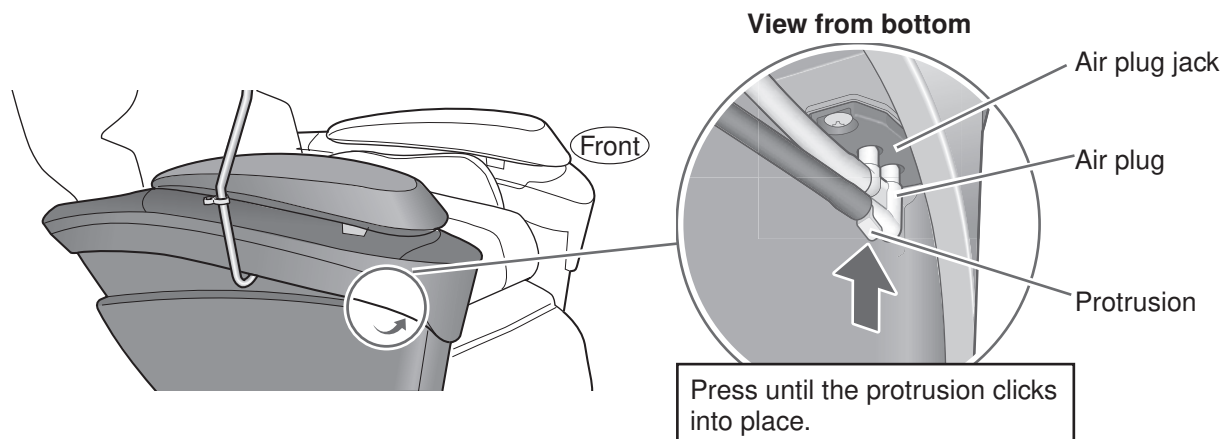
- Put an attachment screw on the edge of the allen key and tighten the screw horizontally to the hole.
- Screw may be damaged if you tighten the screw inserted into the hole crookedly using an allen key.

<When attaching the right armrest>



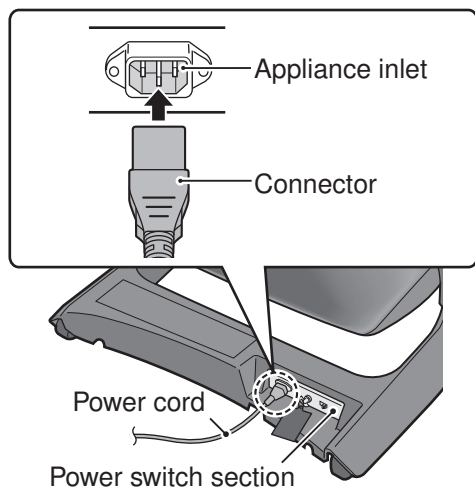
3 Connect the air plugs

- ① Press air plugs into the air plug sockets below the armrest until you hear a click.



- Arm massage will not operate unless the air plugs are inserted securely.
- ② Follow the same step when connecting to the armrest on the left side.

4 Connect the power cord to the unit



- 1 Check for dirt and damage on appliance inlet of the power switch section and the connector of the power cord.
- 2 Insert the connector into the appliance inlet.
- 3 Be sure to push the connector in all the way.

GROUNDING INSTRUCTIONS

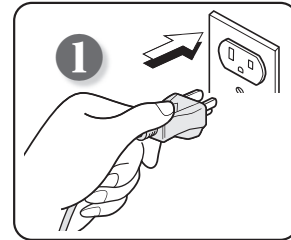
- The unit must be properly grounded. If it should malfunction or break down, grounding provides a path of least resistance for electric current in order to reduce the risk of electric shock.
- This unit is equipped with a cord with an equipment-grounding conductor and a grounding plug. The plug must be plugged into an appropriate outlet that has been properly installed in accordance with all local codes and ordinances.

Assembly (Continued)

5 Turn on the power and raise the backrest to the upright position.

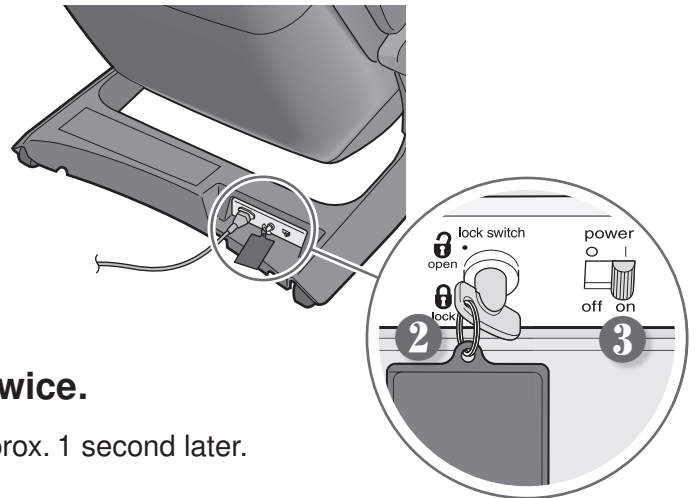
1 Insert the power plug into the power outlet.

- Always be sure to insert into an AC 120 V plug.



2 Confirm the lock switch key is set to the "open" position.

3 Confirm the power switch is set to the "on" position.



4 Press  on the controller twice.

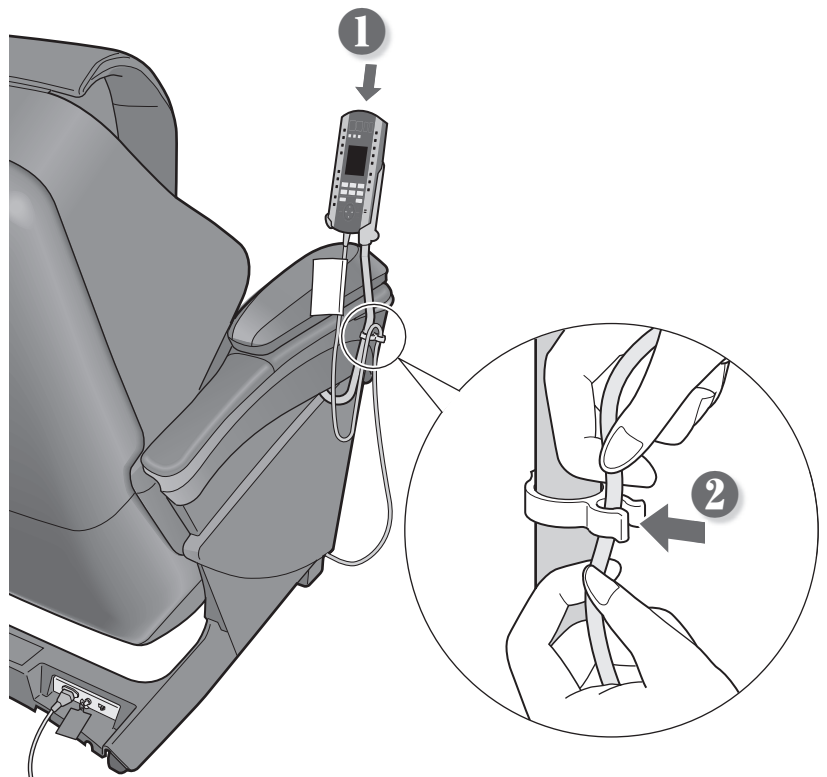
- Press once, and then press again approx. 1 second later. Backrest will rise automatically.

6 Placing the controller

1 Placing the controller into the controller stand.



2 Fasten the controller cord using the clip.

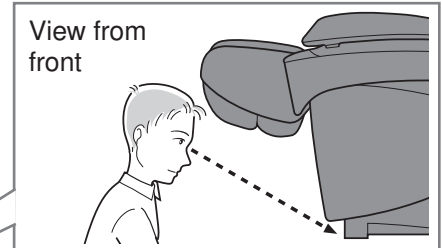
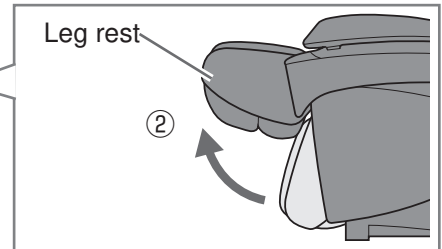
- Fasten so the cable under the clip will not sag too much with the backrest raised. (Because there is a chance of the cord becoming tangled with your feet, etc.)



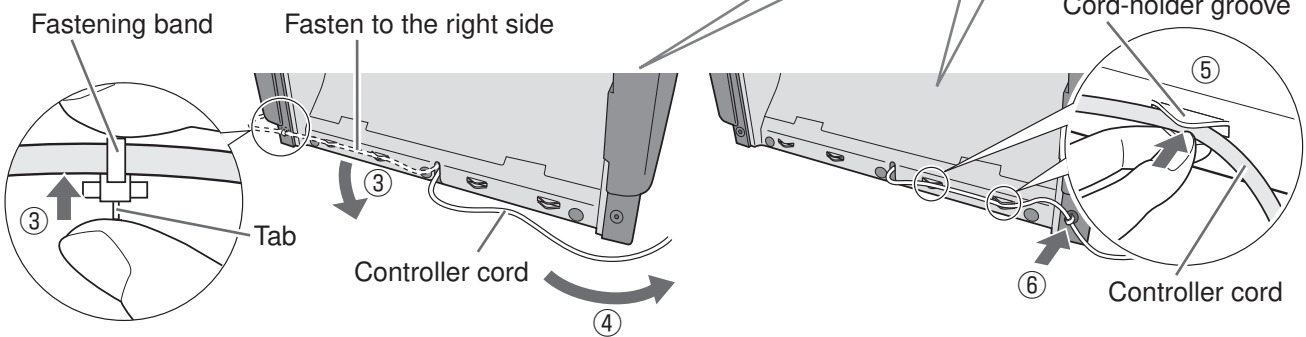
When the controller stand is attached on the left side

- Run the controller cord to the left.

- ① Press  on the controller to turn on the power.
- ② Press  on the controller and hold until the leg rest has risen as far as it will go.
 - Continue pressing until a “beep-beep-beep” sound is heard.
- ③ Disconnect the controller cord.
 - Hook is released by pressing on the tab on the fastening band with your fingers.
- ④ Move the controller cord under the leg rest to the left side.
- ⑤ Fasten the controller cord.
 - Press down from the edge if it does not fit in easily.
- ⑥ Insert the tip of the fastening band into the hole.



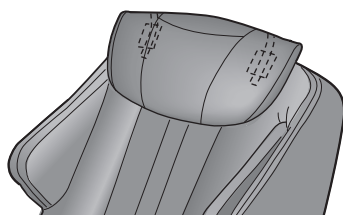
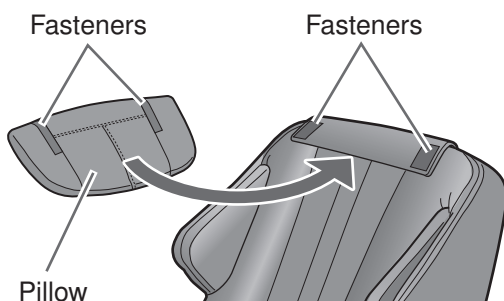
- The controller cord is fastened to the right side prior to leaving the factory.



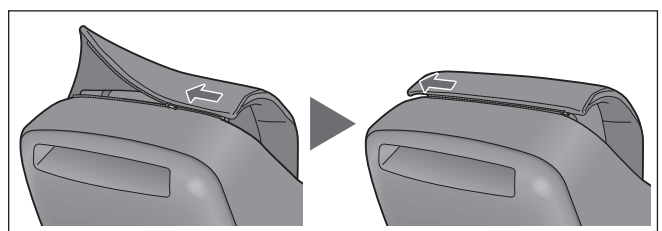
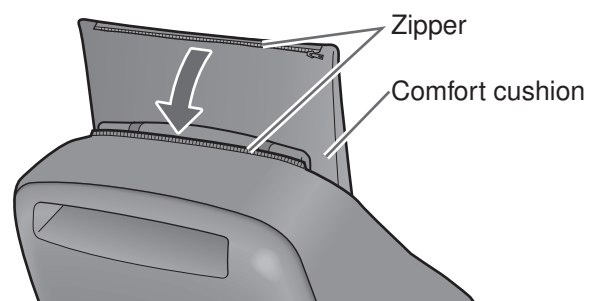
7 Fasten the pillow and the comfort cushion.

1 Fasten the pillow using the fasteners.

- See page EN23 for guidelines on positioning the pillow during the massage.



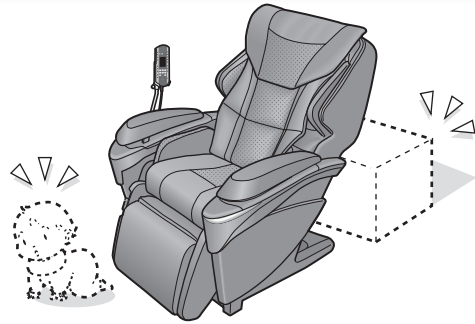
2 Fasten the comfort cushion using the zipper.



Before sitting down

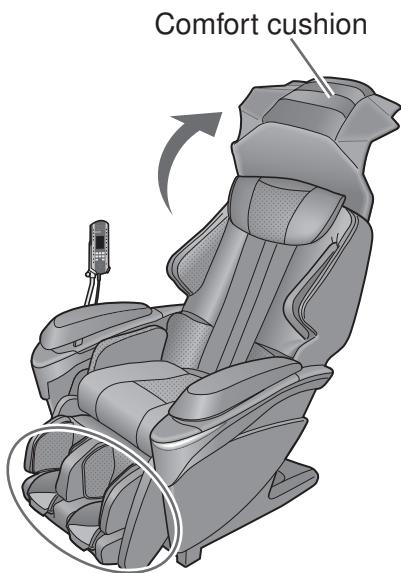
1 Check the surrounding area.

Make sure there are no objects, people, or pets in the vicinity of the unit.



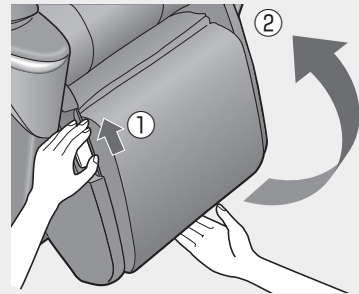
2 Flip up the comfort cushion and deploy the leg & sole massage section.

- Do not massage with the comfort cushion still on the backrest.



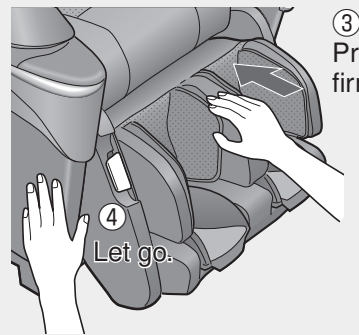
How to deploy the leg & sole massage section

- ① While raising the leg rest rotation lock release lever in the direction of the arrow.



- ② Rotate from bottom.

- ③ Rotate until it stops rotating.



- ④ Let go of the leg rest rotation lock release lever.

- ⑤ Check that the leg rest does not rotate.

! WARNING

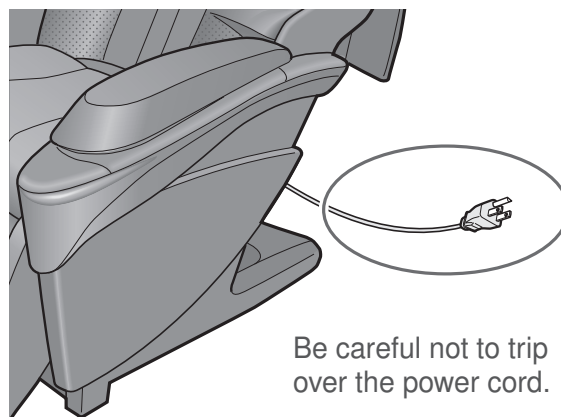
- Sit on the unit after confirming there is no foreign matter between the parts of the unit. (Confirm that there are no foreign objects stuck in the comfort cushion, leg rest or hand & arm massage section.) Sit down and ensure that the leg rest is properly locked in place.

Failure to observe this precaution may result in accident or injury.

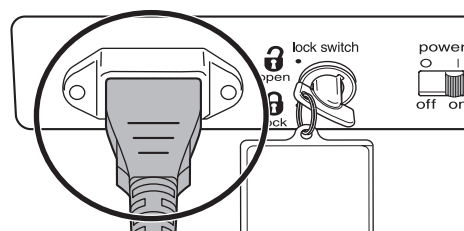
3 Check the power cord and the power plug.

WARNING

- **Periodically remove dust, etc. from the power plug.**
Failure to do so may result in insulation failure due to humidity, etc., which may cause fire. (Remove dust using a dry cloth.)
- **Never operate the unit if it has a damaged power cord or plug. Return the unit to the nearest authorized service center if it is not working properly, if it has been dropped or damaged, or if it has been immersed in water.**
- **Keep power cords away from heated surfaces. Do not carry the unit by the power cord.**

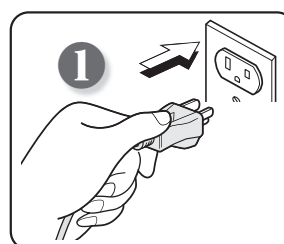


Be sure to push the connector all the way into the appliance inlet.



4 Switching on the power supply

- 1 Insert the power plug into an electrical outlet.
- 2 Turn the lock switch key to the "open" position.
- 3 Slide the power switch to the "on" position.



WARNING

- **Fully insert the power plug to reduce the risk of short-circuit and fire.**
- **Always use sockets and wiring devices at the correct rated value.**
- **Use at the specified power supply 120 V, AC.**
Failure to do so may result in electric shock or fire due to overheating.
- **Do not insert or unplug the power plug with wet hands.**
Doing so may cause electric shock.

